

St. Michael's C.E. Primary School

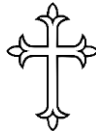
Headteacher:

Mrs S. Dring MA, BA
(Hons), Headteacher



Leigh Road
Howe Bridge
Atherton
Manchester
M46 0PA

Love Faith
Honesty Respect
Courage Kindness



☎ (01942) 883118







enquiries@admin.howebridge.wigan.sch.uk

'Immersed in a Christian Community, each individual is encouraged, challenged and nurtured to learn and grow to achieve their full potential.'

Love, Respect, Kindness, Faith, Honesty and Courage

Newsletter 12th December 2025

Weekly Class Attendance

| | | | | | | | | | | |
|--|--|---|-----------------|-----------|-----------------|-------------|-----------------|-------------|--|---|
|  | Attendance Champions 1 st – 5 th December 2025 |  | | | | | | | | |
| <table border="1"><tr><td>4th</td><td>Y1 96.3%</td></tr><tr><td>5th</td><td>Y4 94%</td></tr><tr><td>6th</td><td>YR 92.7%</td></tr><tr><td>7th</td><td>Y6 92.3%</td></tr></table> | 4 th | Y1 96.3% | 5 th | Y4 94% | 6 th | YR 92.7% | 7 th | Y6 92.3% |  |  |
| 4 th | Y1 96.3% | | | | | | | | | |
| 5 th | Y4 94% | | | | | | | | | |
| 6 th | YR 92.7% | | | | | | | | | |
| 7 th | Y6 92.3% | | | | | | | | | |

Socks Needed 🧦

With our new lunchtime activities, we're encouraging children to enjoy playing outside — even in the rain! ☁️ 😊

Please can all children come to school with a spare pair of socks each day, just in

case their feet get wet.

We are also gratefully accepting donations of spare socks (any sizes) to keep in school for those unexpected soggy moments!

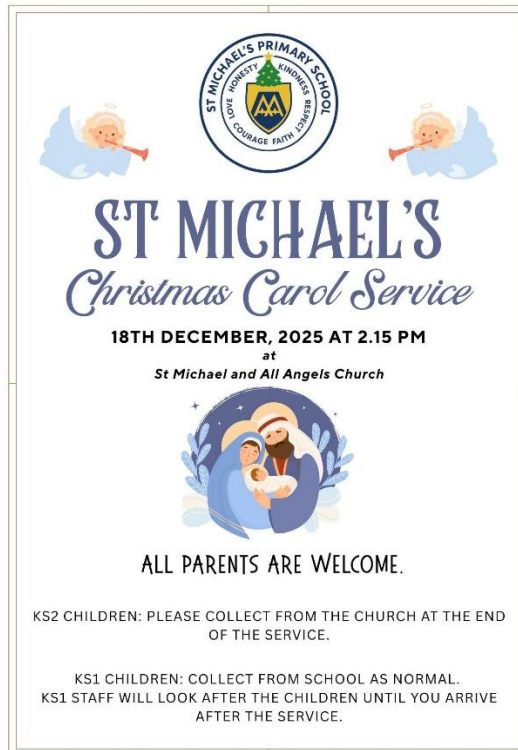


KS2 Carol Concert

We are delighted to invite our KS2 parents to our Christmas Carol Service, a special celebration to mark the festive season.

Our pupils have been working hard to prepare a joyful programme of carols and readings, and we look forward to sharing this magical time together as a school community.

We hope to see you there and share in the festive spirit!



Exciting Job Opportunity! ☀

Join Our Team at a Lovely, Friendly School.

We are delighted to announce a vacancy for a **Welfare Assistant (6.25 hours per week)**. This is a fantastic opportunity for someone who is caring, enthusiastic, and committed to supporting children during the school day.

Why Join Us?

- ◆ Warm, welcoming school community
- ◆ Supportive staff team

- ✦ A chance to make a real difference to our children
- ✦ Perfect for someone looking for a rewarding part-time role

If you are friendly, reliable, and enjoy working with children, we would love to hear from you!

For further details please follow the link [Teaching Assistant Level 1 — greater.jobs Wigan](#)




Warriors Ultimate Christmas Camp

Wigan Warriors Community Foundation are inviting all young Warriors to step into the festive fun on our Ultimate Christmas Camp this December. Taking place at Robin Park Arena from Monday 22 December - Tuesday 23 December (9am-3:30pm), our Christmas Camp is the place to be with awesome activities, winter wonder and surprises for all to unwrap. Open to children aged 5-16 of all ability and experience levels, camp players will develop their core skills and game understanding in fun and engaging sessions led by our Community Foundation coaches. As the countdown to Christmas continues, young Warriors will be treated to an exclusive Winter Wonderland Party filled with festivities and surprises. Don't forget your Christmas jumpers and Santa hats as Christmas arrives to our December camp.

Wigan Warriors Community Foundation – Warriors Ultimate Christmas Camp

 Robin Park Arena, Loire Dr, Wigan WN5 0UH

 Monday 22nd December & Tuesday 23rd December

 9:00am – 3:30pm

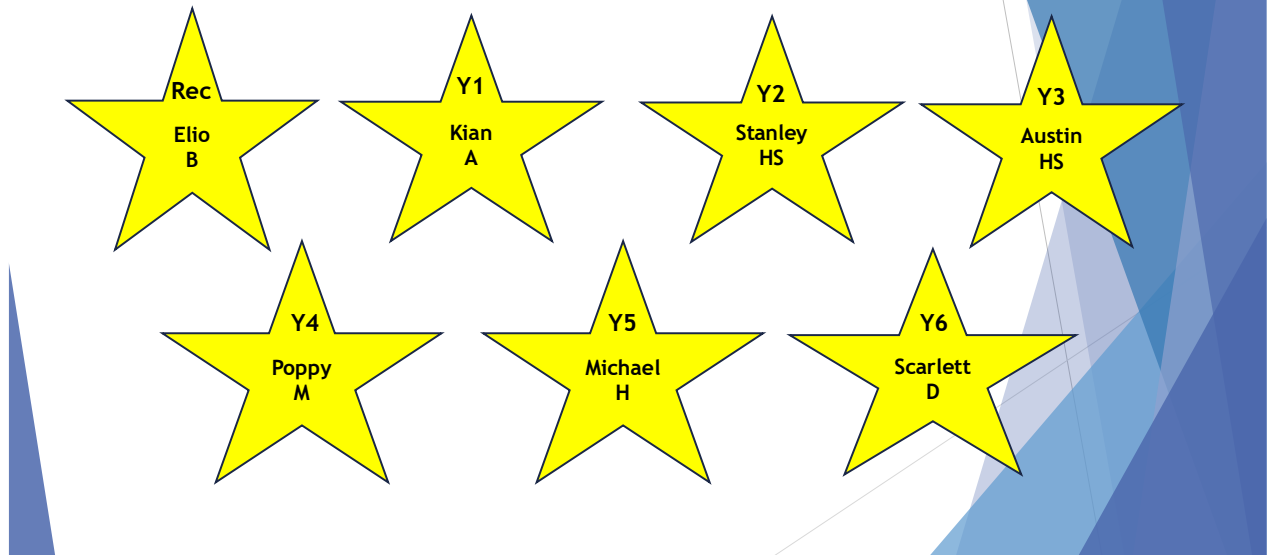
 Ages 5–16

Book on here at- [Warriors Ultimate Christmas Camp \(22nd-23rd December\) - Universe](#)




Stars of the Week

Star of the Week



Next week at a glance

| Week beginning | Before school | During the school day | Music tuition | After school |
|----------------------------|----------------|---|---------------------|---------------|
| 15th Dec | |  | | |
| Monday | Breakfast club | Whole school Collective Worship Year 1 outdoor PE Year 4 outdoor PE Year 3 indoor PE | Guitar | ABC childcare |
| Tuesday | Breakfast club | Whole school singing worship Y3 outdoor PE KS1 Nativity Performance @ 9:30am Ticketed event - £2.50 per ticket now available on Arbor | Drums Violin | ABC childcare |
| Wednesday | Breakfast club | Whole school Collective Worship Rec indoor PE Year 1 outdoor PE KS1 Nativity Performance @ 2:15pm Ticketed event - £2.50 per ticket now available on Arbor | | ABC childcare |
| Thursday | Breakfast club | Class Worship Rec indoor PE Y5 indoor PE Y6 indoor PE Year 2 outdoor PE | | ABC childcare |

| | | | | |
|--------|----------------|---|----------|---|
| | | KS2 Carol Concert at St Michael's Church – Full school uniform with optional Christmas accessories/headbands | | |
| Friday | Breakfast club | Whole school Celebration Worship Year 5 Swimming Year 2 outdoor PE Year 6 outdoor PE Year 4 indoor PE Children welcome to come in own clothes for last day | Keyboard | ABC childcare Finish for Christmas Break at 3:30pm |

Future dates for your diary

(Please note, these will be added to frequently)

| | |
|---|---|
| 24 th December | <p>ST MICHAEL AND ALL ANGELS HOWE BRIDGE</p>  <p>CHRISTINGLE CHRISTMAS EVE 3:30PM ALL WELCOME <i>*Joy to the world*</i></p> |
| 5 th January | Inset day – Staff only |
| 6 th January | Children return to school at 8:50am |
| 12 th January | First I Rock band practise Year 1 phonics workshop 3:30pm |
| 16 th January | Parent Workshop on Autism led by TESS AT 9:15am |
| 5 th February | Young Voices |
| 16 th February – 20 th February | Half Term |
| 23 rd March – 25 th March | Year 4 Robinwood residential |
| 24 th March | Year 1 Blackpool Zoo Trip |
| Thursday 2 nd April | Finish for Easter Break at 3:30pm |
| 20 th April | Children return to school at 8:50am |
| 4 th May | Bank Holiday Monday |
| 25 th May – 29 th May | Half Term |
| 29 th June – 3 rd July | Year 6 Residential trip |
| 6 th July | Year 1 Bring Yer Wellies trip |
| 9 th July |   |
| 16 th July | Finish for Summer Break at 3:30pm |
| 17 th July | Inset day – Staff only |
| 1 st September | Inset day – Staff only |
| 2 nd September | Children return to school at 8:50am |
| 9 th September | Rock Kidz 🐱 🎸 |

Useful Links

School Instagram Account <https://www.instagram.com/st.michaelsceprimaryschool/>

School Facebook Account <https://www.facebook.com/HoweBridgeStMichaelsPrimary>

School Lunches to be ordered on <https://app.schoolgrid.co.uk>

Apply for Free School Meals <https://forms.wigan.gov.uk/xfp/form/750>

Internet Safety Links: [Safer Internet Day 2025 - UK Safer Internet Centre](#)

Mental Health and wellbeing details – www.actionforhappiness.org

Samaritans 116 123 (freephone 24 hours a day)

Mind - www.mind.org.uk

Online resources

For parents:

<https://www.nspcc.org.uk/keeping-children-safe/online-safety/>

<https://www.saferinternet.org.uk/advice-centre/parents-and-carers>

<https://www.thinkuknow.co.uk/parents/>

<https://www.childnet.com/parents-and-carers>

For children:

<http://www.safetynetkids.org.uk/personal-safety/staying-safe-online/>

<https://www.thinkuknow.co.uk/>

<https://www.internetmatters.org/advice/6-10/>